

INDUSTRIAL SPACE FOR LEASE

1180 Stratford Road, Stratford, CT



To arrange a tour contact:
Bruce Wettstein, SIOR 203-226-7101 Ext 2
bruce@vidalwettenstein.com


SIOR Individual Members
Society of Industrial & Office Realtors

VIDAL/WETTENSTEIN, LLC



719 Post Road East, Westport, CT 06880
www.vidalwettenstein.com

All information from sources deemed reliable and is submitted subject to errors, omissions, change of price, rental, and property sale and withdrawal notice.

1180 Stratford Road, Stratford, CT

5,511 Square Feet Available

PROPERTY DETAILS

Building Area: 5,511± SF

Drive-in-doors: 2, 14'x14' each

Clear Height: 17' at side, 21' at the eave

Columns: only columns are for the floor mounted crane

Parking: 15±

Bathrooms: 1 bathroom

Heating: radiant gas fired

Gas: Yes

Water/ Sewer: City

Electric: 12/240 volt, 3 phase, 300 amps

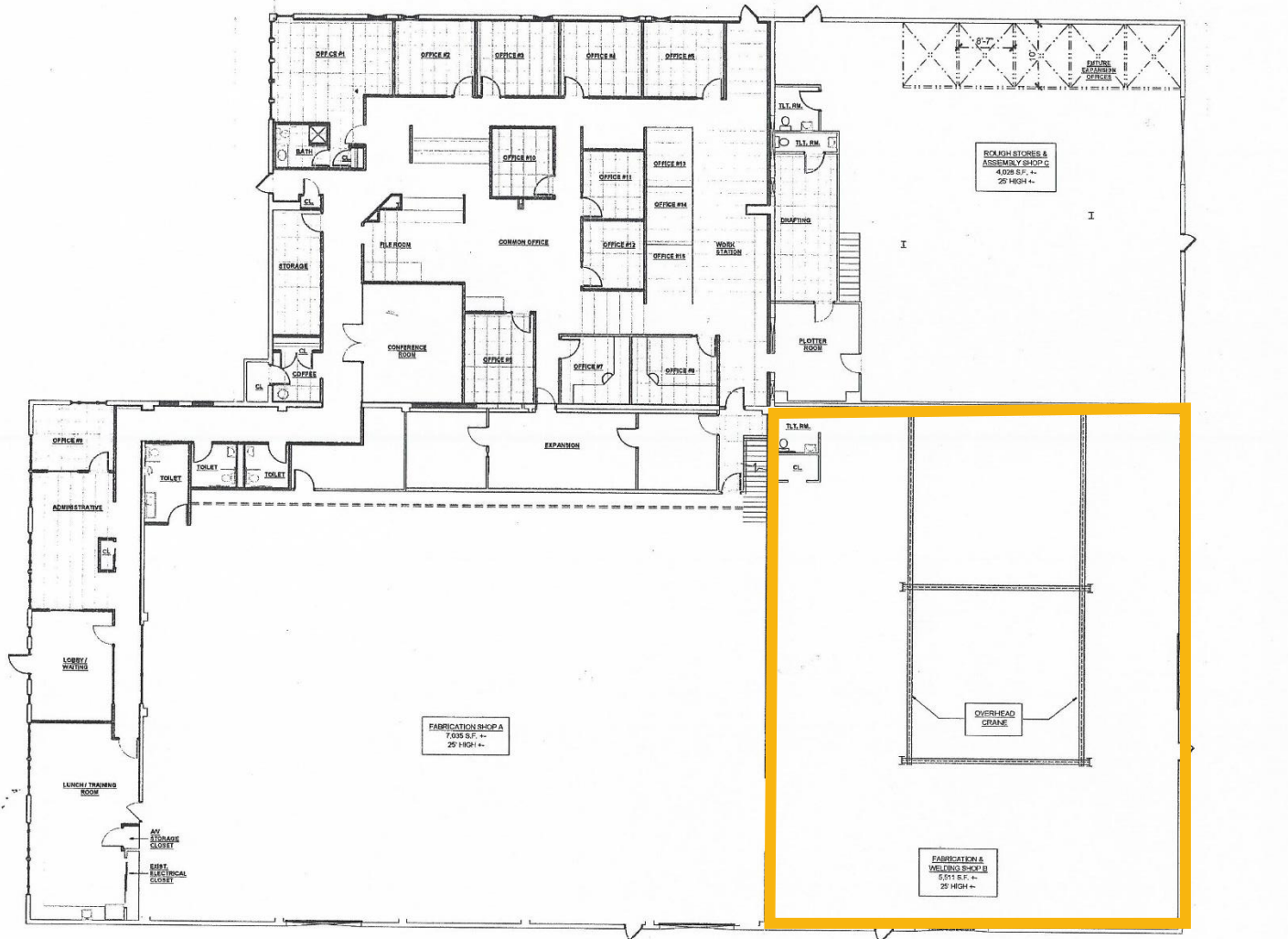
Price: \$13.00 NNN

Location: Convenient to exit 29 or 30 of I-95



- Occupancy, immediate
- Pre-fab butler building
- Overhead crane
- Air compressor lines in place
- Sky lights in place

1180 Stratford Road, Stratford, CT



REVISIONS		THESE DRAWINGS AND SPECIFICATIONS ARE THE PROPERTY OF VIDAL/WETTENSTEIN, LLC. NO PART OF THESE DRAWINGS OR SPECIFICATIONS MAY BE REPRODUCED OR TRANSMITTED IN ANY FORM OR BY ANY MEANS, ELECTRONIC OR MECHANICAL, WITHOUT THE WRITTEN PERMISSION OF VIDAL/WETTENSTEIN, LLC.		MAIN ENTERPRISES INC OFFICE LAYOUT 1180 STRATFORD ROAD Stratford, Connecticut FLOOR PLAN

1180 Stratford Road, Stratford, CT

