

# PRIME MEDICAL SPACE FOR LEASE

162 Kings Highway North, Westport, CT



To arrange a tour contact:  
David Fugitt | 203-226-7101 Ext 5  
[david@vidalwettenstein.com](mailto:david@vidalwettenstein.com)

To arrange a tour contact:  
Silvester Garza 203-226-7101 Ext 8  
[silvester@vidalwettenstein.com](mailto:silvester@vidalwettenstein.com)

  
**SIOR** Individual Members  
Society of Industrial & Office Realtors

**VIDAL/WETTENSTEIN, LLC**



719 Post Road East, Westport, CT 06880  
[www.vidalwettenstein.com](http://www.vidalwettenstein.com)

All information from sources deemed reliable and is submitted subject to errors, omissions, change of price, rental, and property sale and withdrawal notice.



# 162 Kings Highway North, Westport, CT

## One Block to Downtown

### 3,000 Square Feet Available Divisible

Spectacular upscale space

Will truly impress your patients/clients

Join many established medical practices

Excellent parking

Fabulous river views

Very accessible

Well known downtown location

Lease rate: \$26.50 PSF NNN



Location:

Proximity to the Merritt Parkway and I-95.



**SIOR**

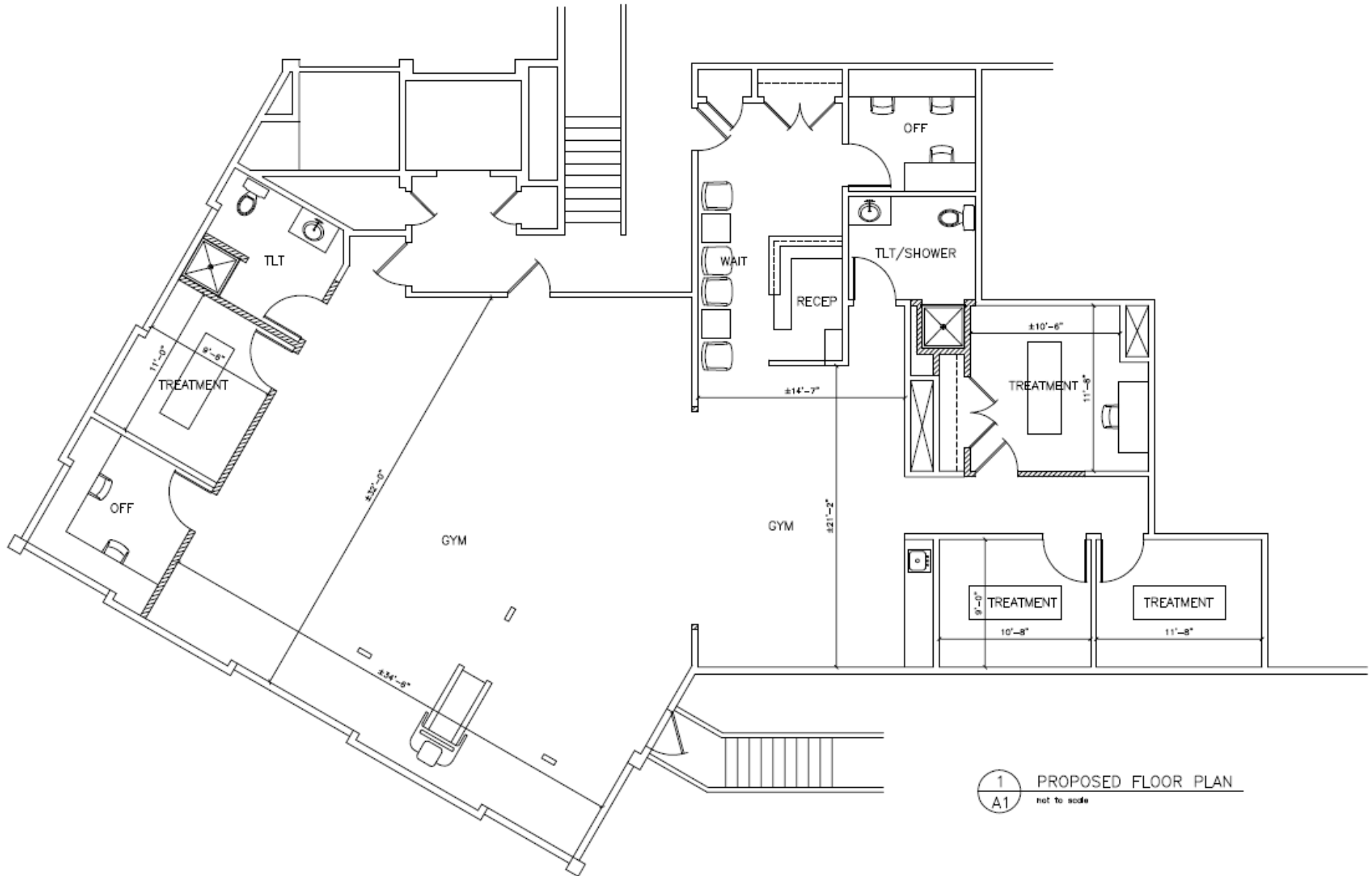
Individual Members  
Society of Industrial & Office Realtors

## VIDAL/WETTENSTEIN, LLC



719 Post Road East, Westport, CT 06880  
[www.vidalwettenstein.com](http://www.vidalwettenstein.com)

# 162 Kings Highway North, Westport, CT





# 162 Kings Highway North, Westport, CT



VIDAL/WETTENSTEIN, LLC



719 Post Road East, Westport, CT 06880  
www.vidalwettenstein.com

All information from sources deemed reliable and is submitted subject to errors, omissions, change of price, rental, and property sale and withdrawal notice.