

# PROFESSIONAL OFFICE/INDUSTRIAL UNIT FOR LEASE

264 Quarry Road A & B , Milford, CT



To arrange a tour contact:  
Scott Zakos | 203-226-7101 Ext 4  
[scott@vidalwettenstein.com](mailto:scott@vidalwettenstein.com)



VIDAL/WETTENSTEIN, LLC



719 Post Road East, Westport, CT 06880  
[www.vidalwettenstein.com](http://www.vidalwettenstein.com)

All information from sources deemed reliable and is submitted subject to errors, omissions, change of price, rental, and property sale and withdrawal notice.

# 264 Quarry Road A & B, Milford, CT

## SPACE DETAILS

Area: 2,600± SF

Ceiling Height: 12'

Zoning: ID

Parking: Abundant

AC: Yes 100%

Loading Docks: 2 drive in doors

Sprinkler: Yes, wet system

Heating: Gas

Gas: Yes

Water/ Sewer: City

Lease rate: \$9.50 PSF NNN (\$4.00)

Located in Quarry Road Business Park



Location: Ideal location off exit 40 of I-95



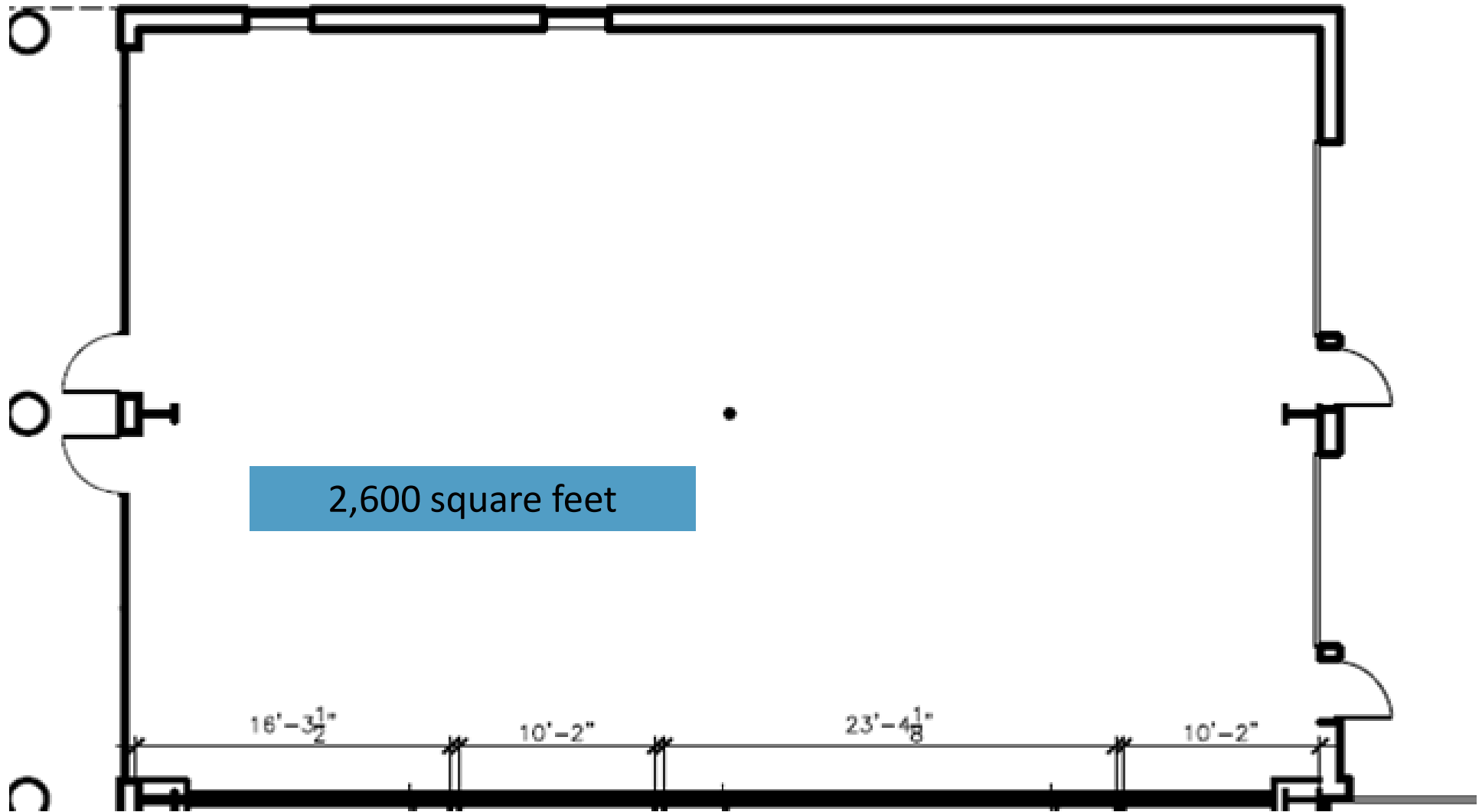
**SIOR** Individual Members  
Society of Industrial & Office Realtors

**VIDAL/WETTENSTEIN, LLC**



719 Post Road East, Westport, CT 06880  
[www.vidalwettenstein.com](http://www.vidalwettenstein.com)

# 264 Quarry Road A & B, Milford, CT





# 264 Quarry Road A&B, Milford, CT



Located in Quarry Road Business Park



# 264 Quarry Road A&B, Milford, CT

