

AVAILABLE FOR LEASE

300 Avon Street, Stratford, CT



3,324 square feet



6,553 square feet

To arrange a tour contact:
Bruce Wettstein, SIOR 203-226-7101 Ext 2
bruce@vidalwettenstein.com



VIDAL/WETTENSTEIN, LLC



719 Post Road East, Westport, CT 06880
www.vidalwettenstein.com

All information from sources deemed reliable and is submitted subject to errors, omissions, change of price, rental, and property sale and withdrawal notice.

300 Avon Street, Stratford, CT

PROPERTY DETAILS

Building Area: 6,553 ± SF

Clear Height: 15' clear

Zoning: RM-1

Parking: total of 70±

Sprinklered: yes

Span: only 2 columns in the space

Drive in door: 1 10x12 drive in door
Overhead door: 1 14x14 and 1 10x10 o/h door
Loading dock: 1 8x8 loading dock

Electric: 200 Amps

Gas: Yes natural gas, o/h forced air

Water/ Sewer: City

CAM: includes base electric, taxes and common charges

Lease Price: \$11.00 NNN

Comments: wall vent in space

PROPERTY DETAILS

Building Area: 3,324 ± SF

Clear Height: 12' clear

Zoning: RM-1

Parking: total of 70±

Sprinklered: yes

Span: clear span

Drive in door: 1 8x8 drive in door

Electric: 400 amps, 240 volts, 3ph, 4 wire

Gas: Yes natural gas, o/h forced air

Water/ Sewer: City

CAM: includes base electric, taxes and common charges

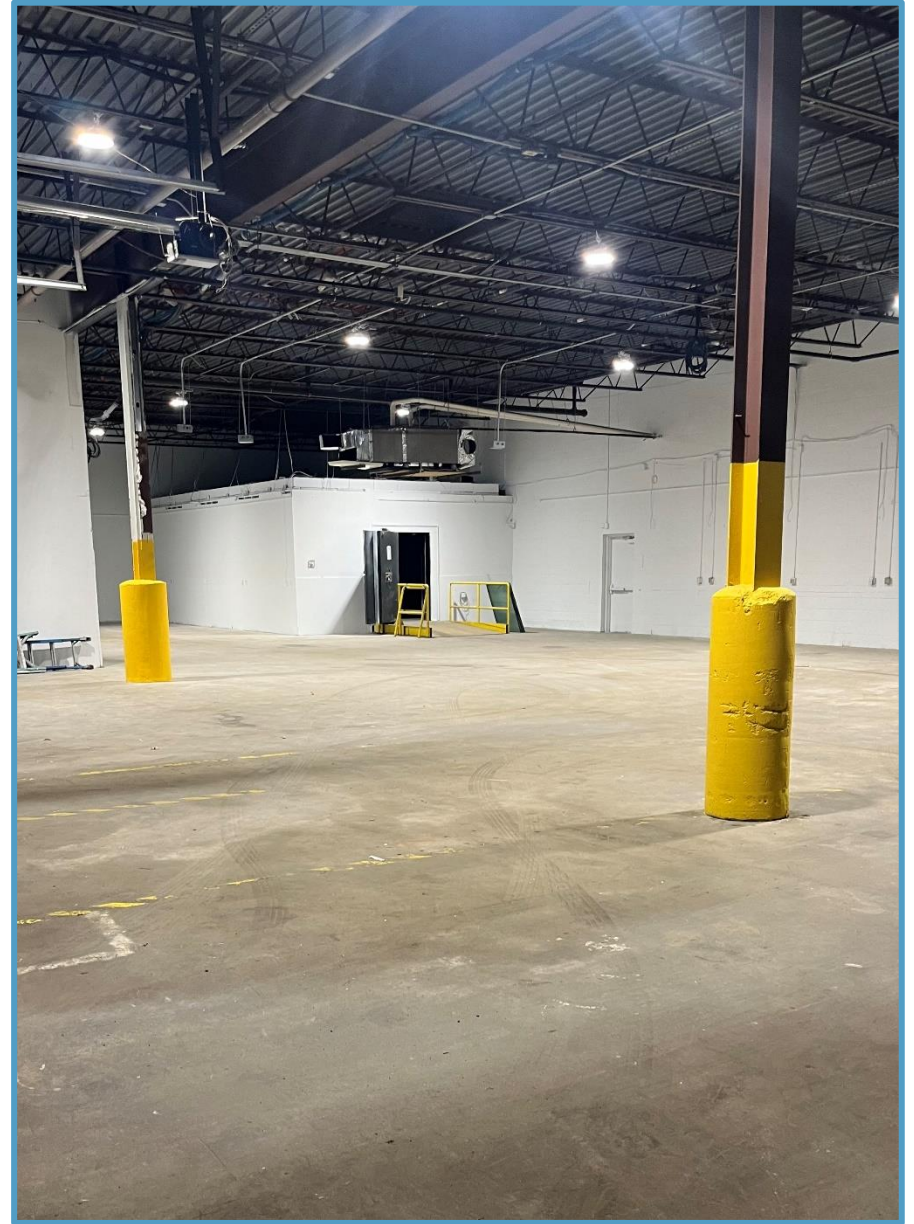
Lease Price: \$11.00 NNN



Location: Convenient to exit 31 of I-95

300 Avon Street, Stratford, CT

6,553 square feet

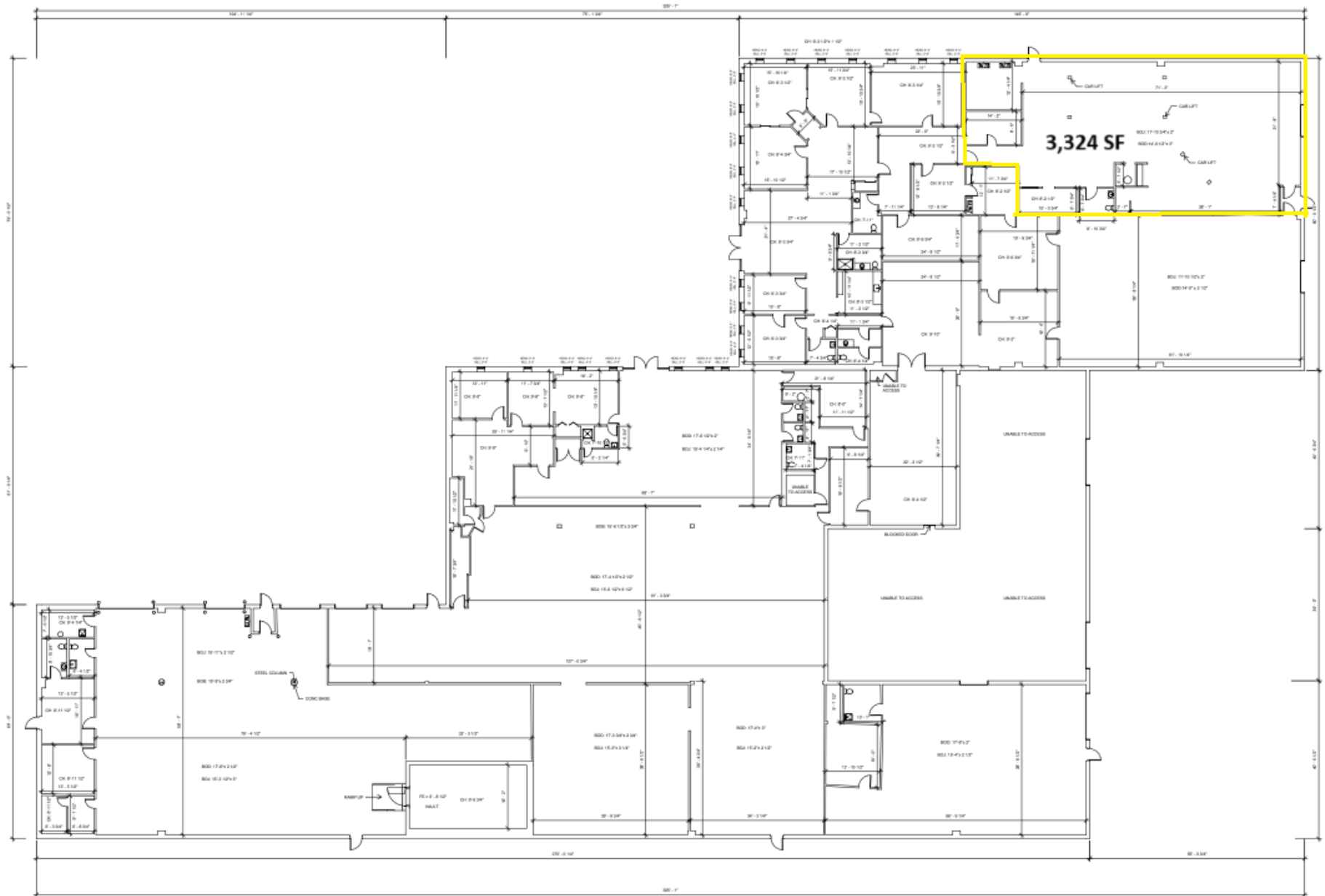


300 Avon Street, Stratford, CT

3,324 square feet



300 Avon Street, Stratford, CT



300 Avon Street, Stratford, CT

