

AVAILABLE FOR LEASE

8 Forest Parkway, Shelton, CT



To arrange a tour contact:
Bruce Wettenstein, SIOR
203-226-7101 Ext 2
bruce@vidalwettenstein.com



VIDAL/WETTENSTEIN, LLC



719 Post Road East, Westport, CT 06880
www.vidalwettenstein.com

All information from sources deemed reliable and is submitted subject to errors, omissions, change of price, rental, and property sale and withdrawal notice.

8 Forest Parkway, Shelton, CT

PROPERTY DETAILS

Building Area: 15,550± SF, including approximately 3,000 SF offices

Land Area: 2.75 acre

Zoning: LIP

Parking: 47± cars plus additional possible

Age: constructed in 1987±

Sprinklered: yes, wet system

Clear height: 12' to 13' clear

Loading: Two 8'x 10' docks with levelers and weather seals, and 8' walk in ramp

Electrical Service: 600 amps, 480 volts, 3 phase, 4 wire, bus duct in production area

HVAC: Heat is forced hot air, 100% air conditioned, new Carrier unit replaced 2003

Utilities: Water/ Sewer: City, Natural gas

Price negotiable, Owner will offer an option to purchase

- Occupancy September 1, 2025
- Single story block and steel
- Rubber membrane roof, replaced in 2004
- Concrete floor with epoxy finish
- Single row center column

Down draft fans in production, in ground sprinkler system, full kitchen. President's office has a bathroom and shower, wall fan in production, new florescent low energy lighting fixtures in the shop, air compressor system, men's & woman's bathrooms in production area, new hot water heater for bathrooms installed 2005, slop sink, fire alarm to central station, Sonitrol security system.



VIDAL/WETTENSTEIN, LLC



719 Post Road East, Westport, CT 06880
www.vidalwettenstein.com

8 Forest Parkway, Shelton, CT



Electrical panels

Production area

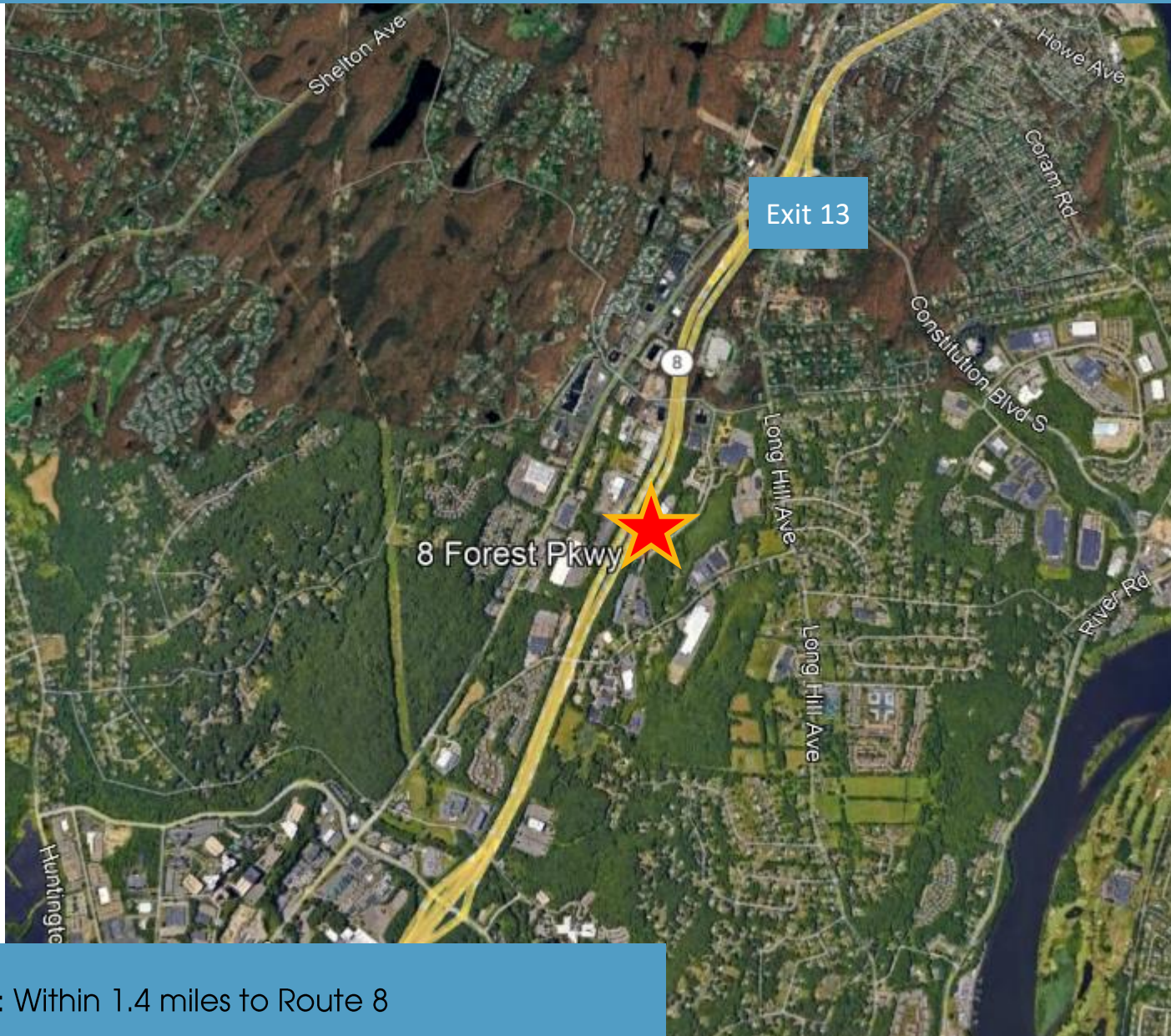


Loading docks

8 Forest Parkway, Shelton, CT



8 Forest Parkway, Shelton, CT



Location: Within 1.4 miles to Route 8



VIDAL/WETTENSTEIN, LLC



719 Post Road East, Westport, CT 06880
www.vidalwettenstein.com

